

**Unilumin**

# ULWIII PRO SERIES

First automatic production  
NPP LED display



# ULWIII Pro Series

## More intelligent More powerful

**7 days** fast delivery

High integration

High evenness

Efficient heat dissipation

High flexibility



# 7 days fast delivery

**400,000m<sup>2</sup>**

Intelligent  
manufacturing base

**Smart Factory**

Fully automatic  
production

**1300+**

Professional  
skilled staff



The world's largest  
LED display manufacturing base

ULWIII pro enables fully automatic production with no labor involved, excellent precision, higher efficiency, and fast delivery in 7 days.

## Why Automatic Production?

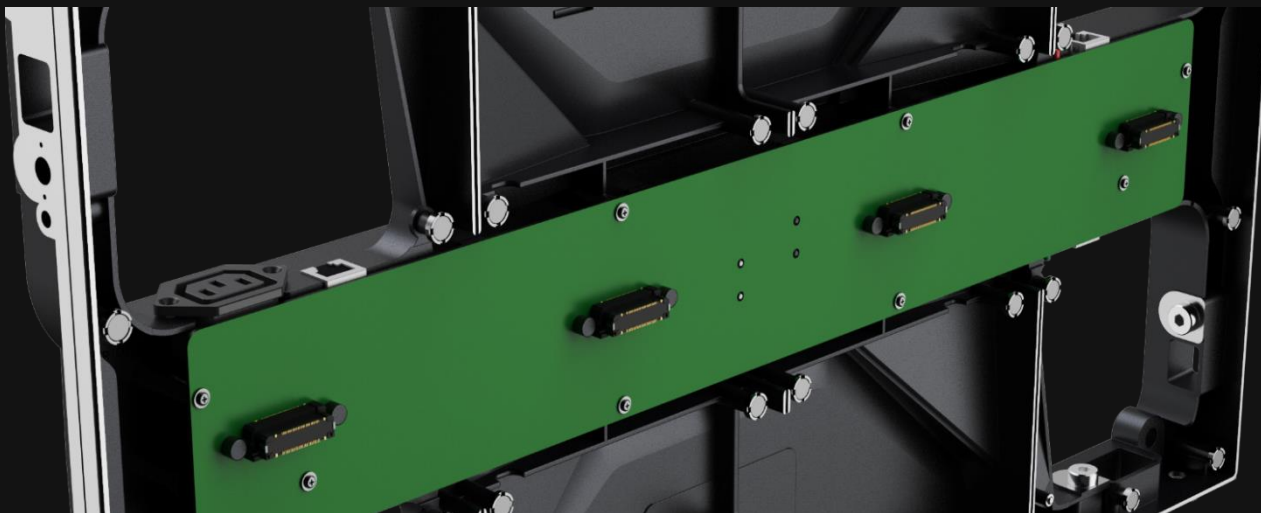
- Improve production accuracy and ensure product quality
- Improve production efficiency for faster delivery
- Reduce the costs of customer by reducing labor costs

# High integration, more stable



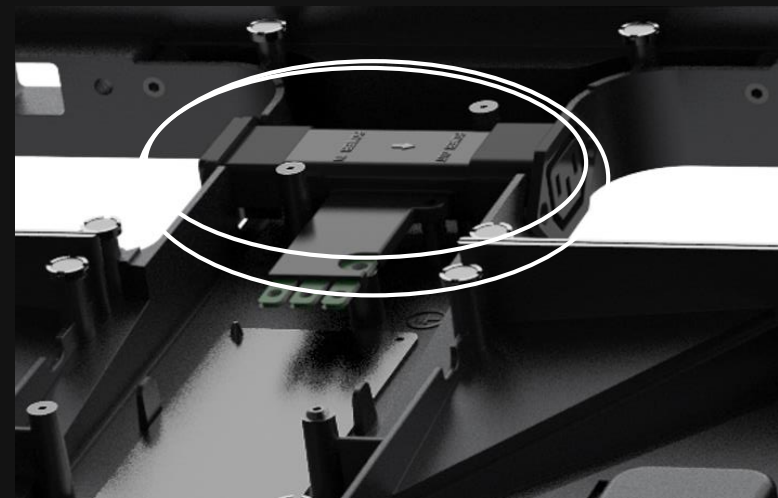
## High Integration

- **Receiving card and hub 2-in-1 high integration design** increases signal transmission stability



## No cable Inside

- power input connects to PSU with integrated IEC connector
- Supporting dual power input for high stability

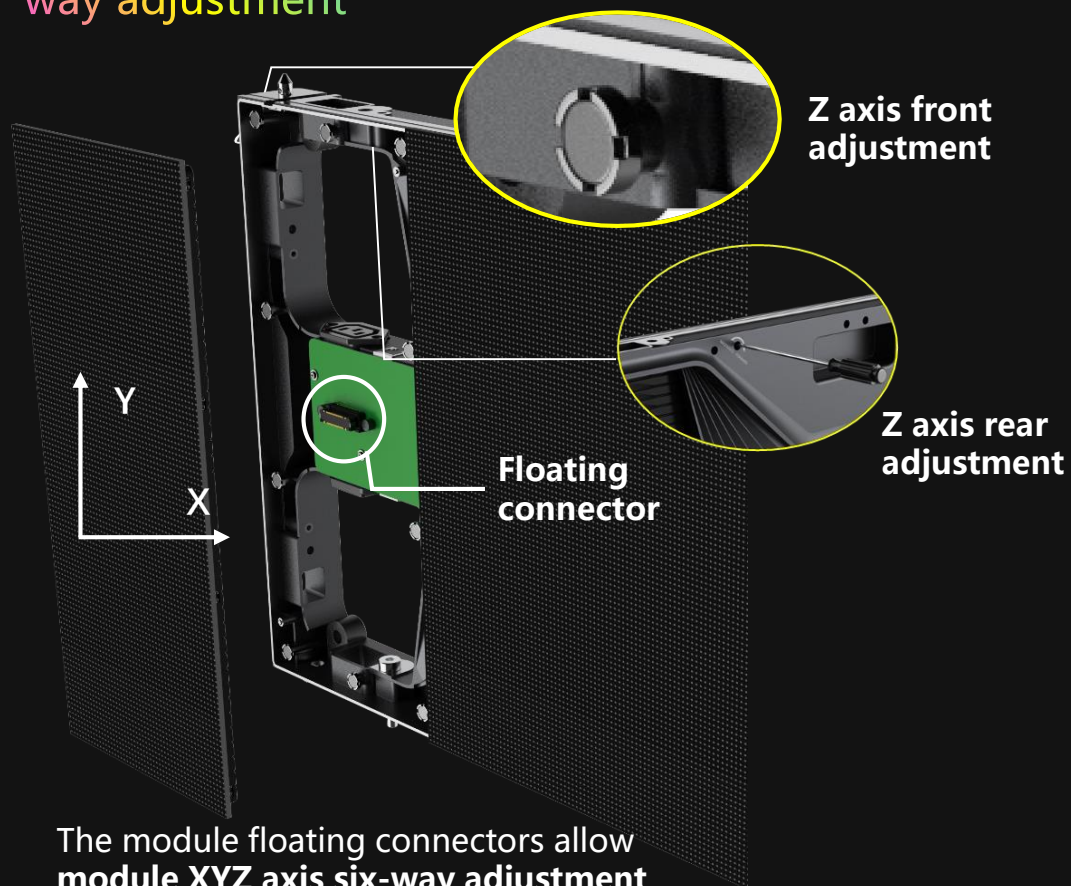




# XYZ axis six-way adjustment

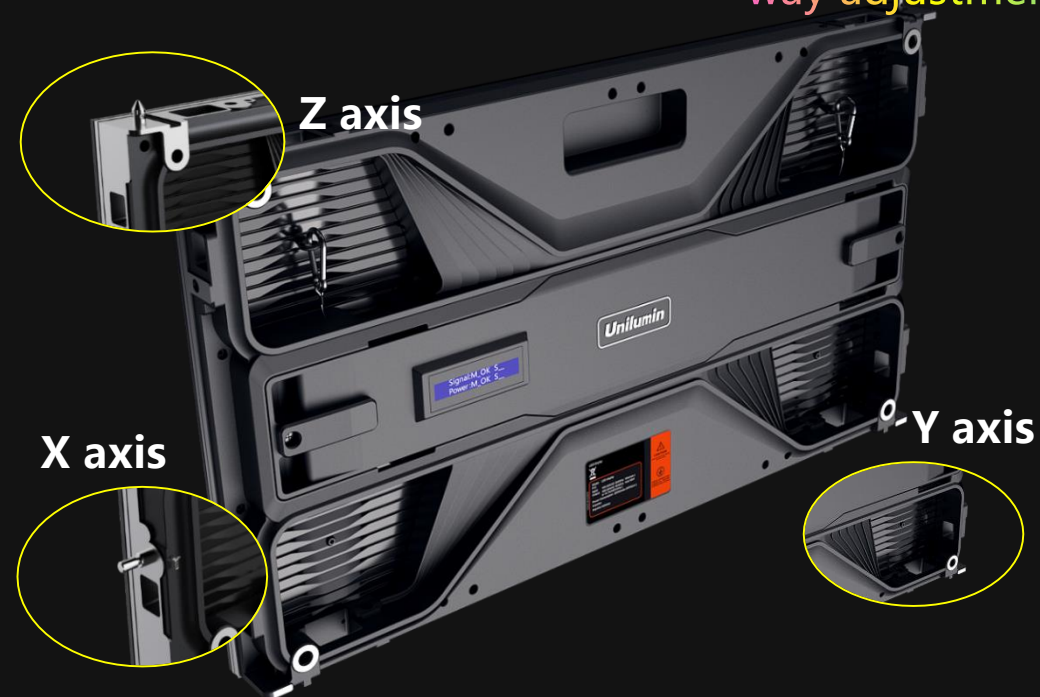
The flatness can be adjusted to **0.1mm**

Module XYZ axis six-way adjustment



The module floating connectors allow **module XYZ axis six-way adjustment** with specific tools

Cabinet XYZ axis six-way adjustment



Ensure high performance  
and stable operation

Double-channel wavy  
cooling fin design



# Efficient heat dissipation

Heat  
conduction

Fast heat  
dissipation

PSU tightly stick to the back cover



One-piece complete cabinet

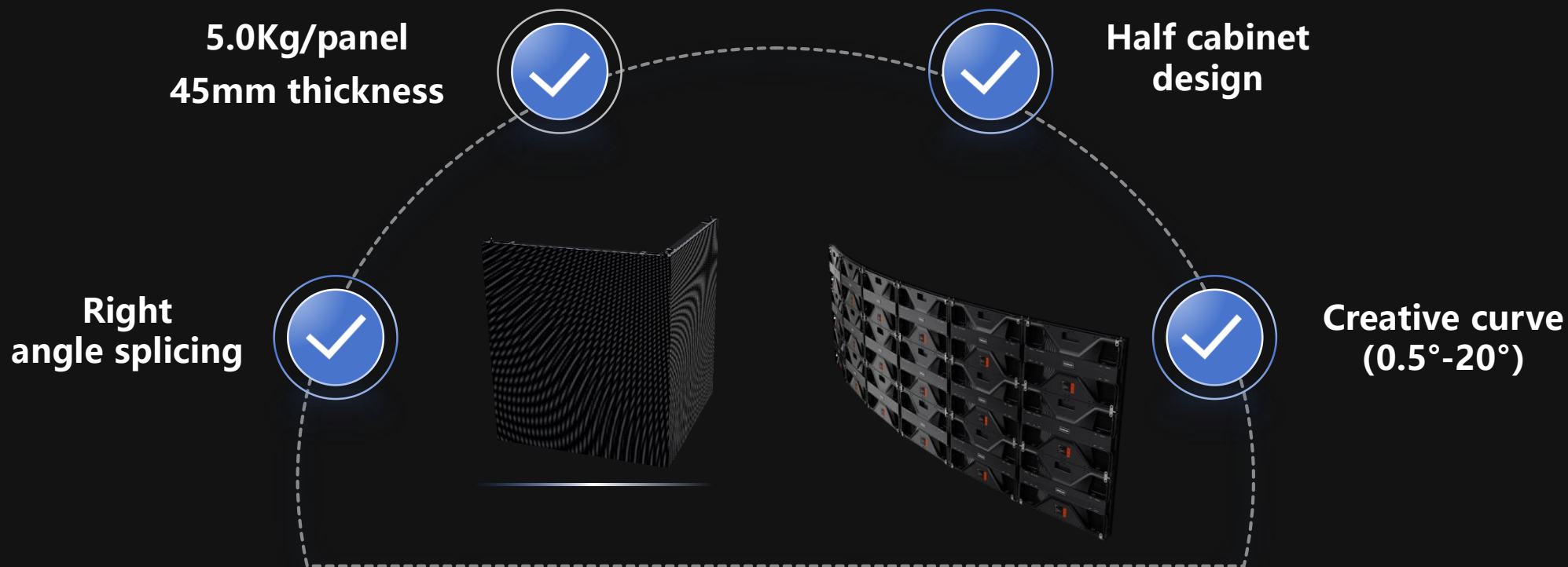


# High flexibility

## Flexible shape

Support inner curve, right angle and half cabinet

Support max 20° inner curve cabinet splicing, a complete circle can be made up with 18 cabinets



Product need to be customized, please consult your regional sales representative for delivery cycle.

# Superior visual effect

## 16bit high gray-scale

16bit high gray-scale display , vivid color、 smooth color transition , eliminating low gray outline blur 、 low gray color cast problems.

## Accurate color calibration

Display control system realizing fine color correction, keeps a high color consistency in different states .

## Super wide Angle, super high refresh

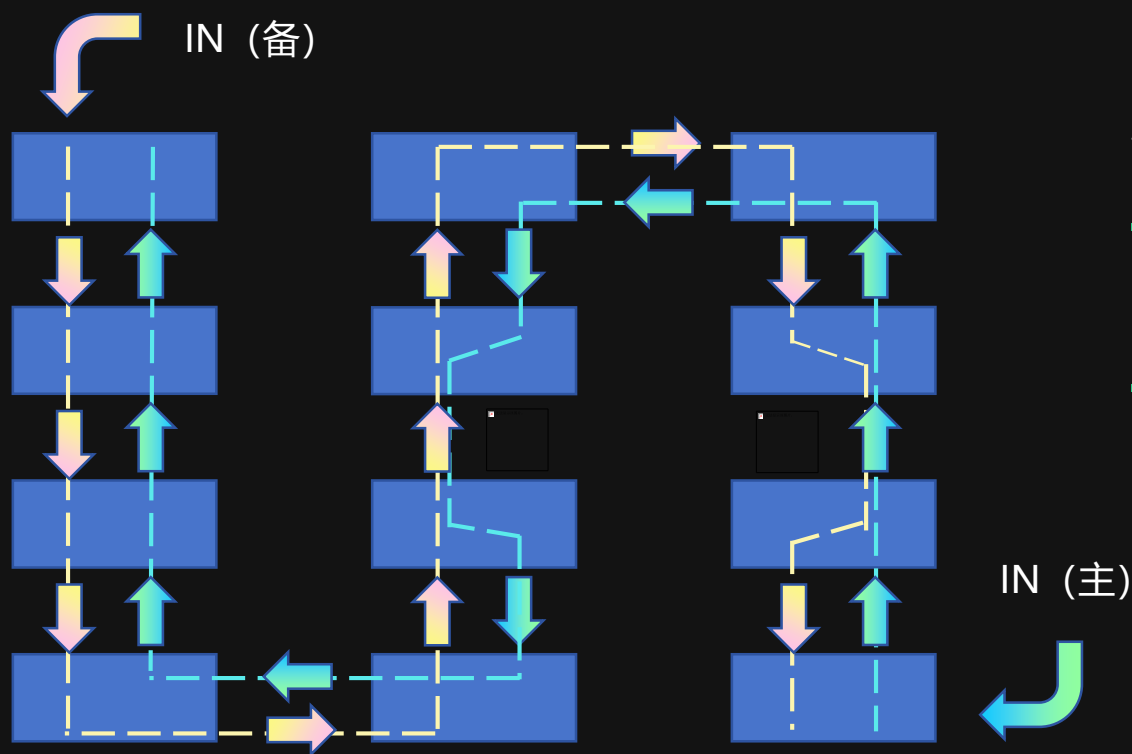
Ultra-wide Angle, support **7680Hz** ultra-high refresh, color temperature adjustable, high-fidelity restoration picture color, smooth dynamic display.





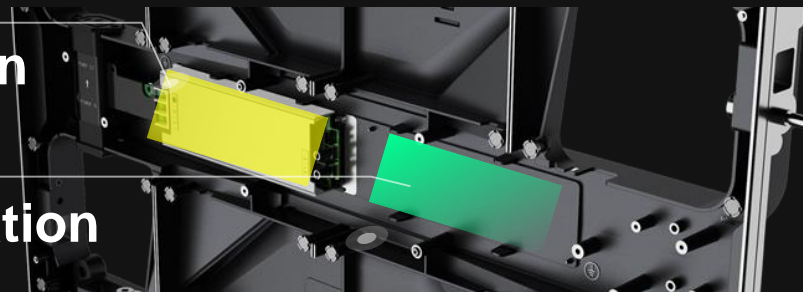
# High stability (Optional)

Support power supply and signal dual back-ups, guarantee critical events will be hold successfully.



Main PSU location

Backup PSU location



# One-Button Control (Optional)



**Sleep Mode**  
5W/Panel

The ULW III Pro series consumes a mere 5 W/panel in sleep mode. This enhanced energy efficiency paves the way for a more sustainable business operation, helping you save on energy costs while ensuring a quick start for the next use.



\*Photo is for illustration only

# Front & Rear Maintenance

## Larger size module

"4 x 1" mode design

## Fully front and rear maintenance

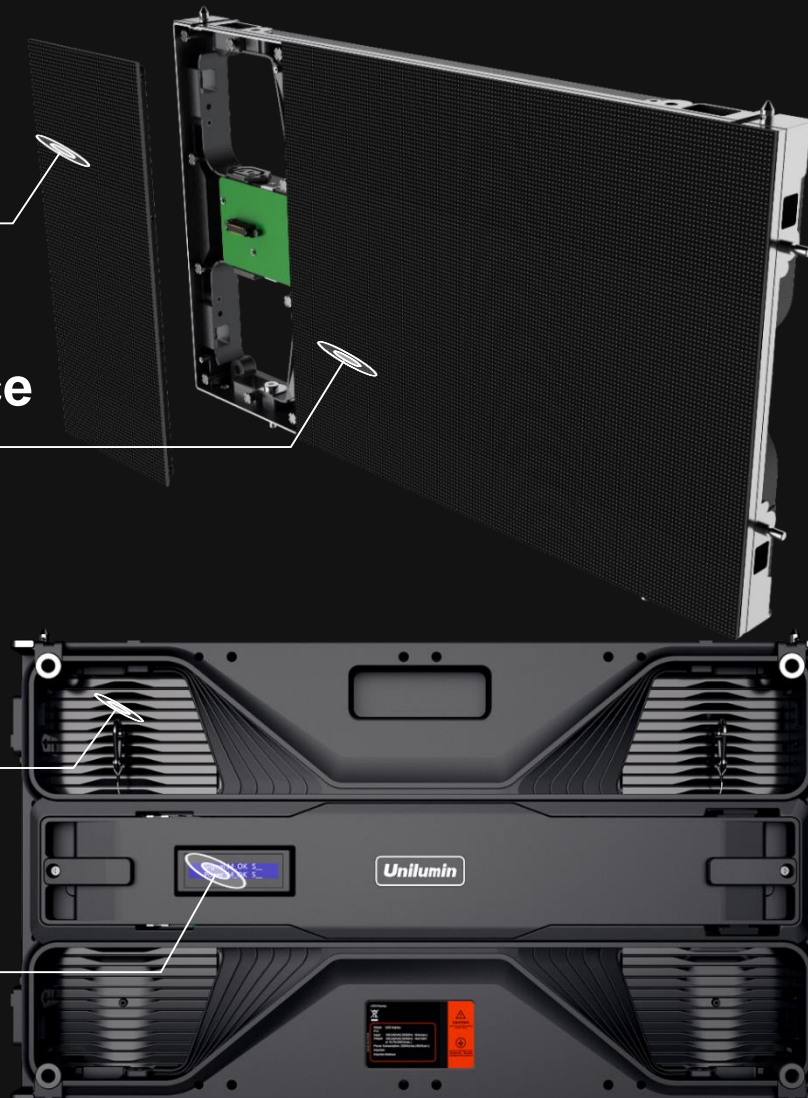
Fully front and rear maintenance of  
Modules, power supply and 2-in1 receiving card

## Safety rope

Prevent modules from falling

## LCD (liquid crystal display) optional

The rear LCD displays power and signal running status



Specification

| Product              | ULWIII Pro Series          |         |         |         |         |
|----------------------|----------------------------|---------|---------|---------|---------|
| Pixel Pitch          | 0.9                        | 1.2     | 1.5     | 1.8     | 2.5     |
| Panel Size           | 600×337.5×47.8mm           |         |         |         |         |
| Weight               | 5kg/panel                  |         |         |         |         |
| Brightness           | 600nits                    |         |         |         |         |
| Maintenance          | Front and rear maintenance |         |         |         |         |
| Fault monitoring     | Indicator light & LCD *    |         |         |         |         |
| Ucare                | Option                     |         |         |         |         |
| Input Power<Max>     | 700W/m²                    | 600W/m² | 500W/m² | 475W/m² | 425W/m² |
| Input Power<Typical> | 234W/m²                    | 200W/m² | 167W/m² | 158W/m² | 142W/m² |



## Classic cases



**Northern Shangdu million kilowatt wind  
power base wisdom control center 49.21m<sup>2</sup>**



**Hangzhou National Edition  
Museum 118.88m<sup>2</sup>**

# Classic cases



Wenshang County big data center 28.35m<sup>2</sup>



China Mobile cloud data center



## Classic cases



Hong kong China 21.87m<sup>2</sup>



China Central Television (CCTV)  
in Qatar World Cup live hall studio

***Unilumin***

**T H A N K S**

ULWIII PRO SERIES