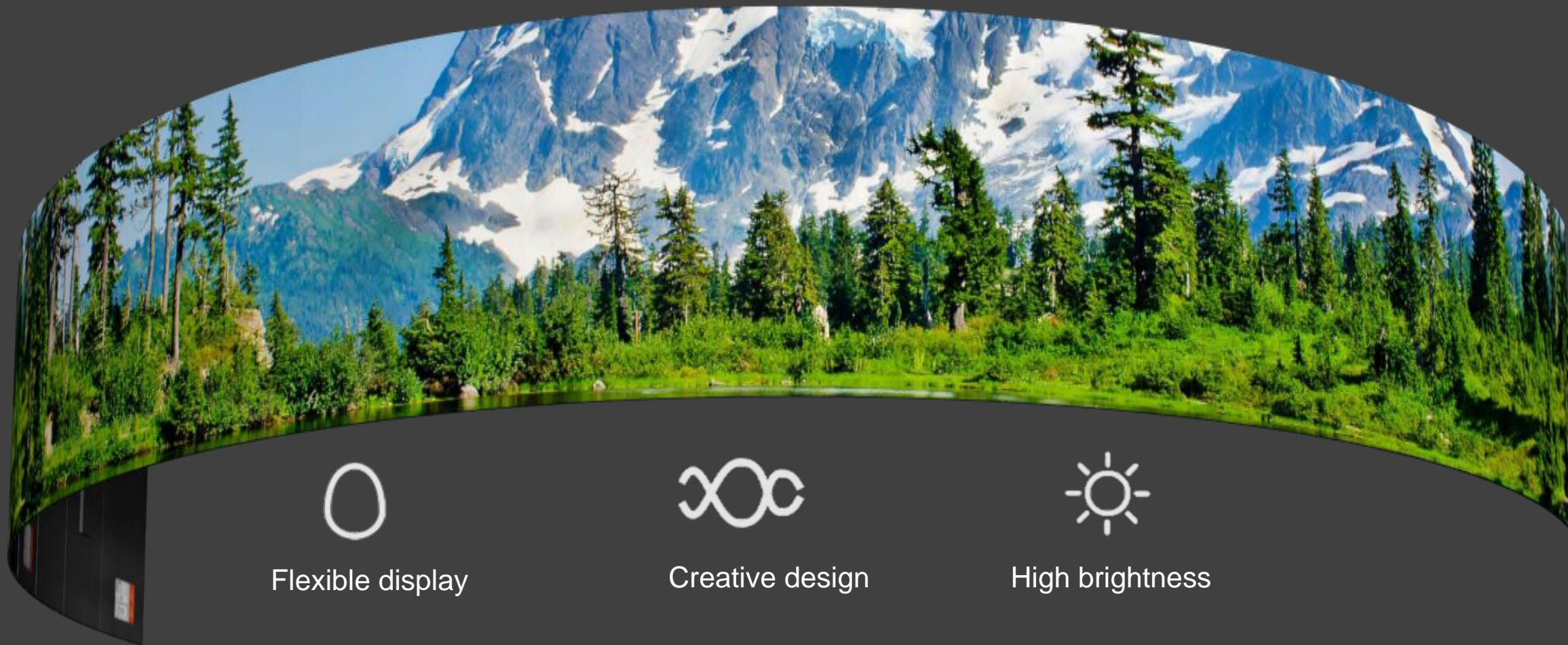


Unilumin

UHF

Flexible Display, Creative Solution





Flexible display



Creative design



High brightness



Wide color gamut



Wide viewing angle

TOGETHER, FOR A BRIGHTER FUTURE

Flexible Display, Creative Solution

- Dynamic creativity and ultra flexibility
- Sustainable reliability
- Streamline operational efficiency



Dynamic Creativity

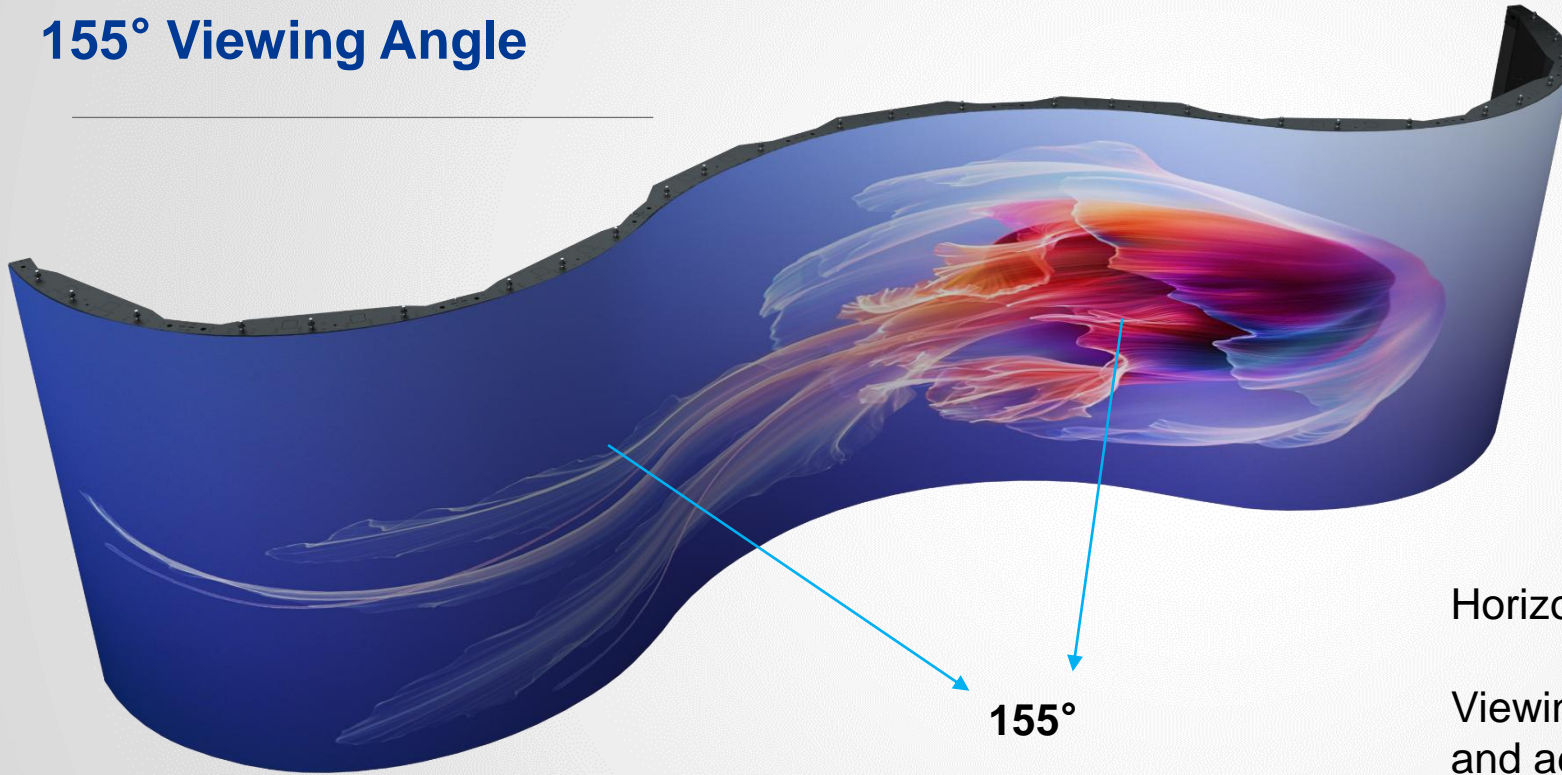
Creativity is easy with UHF.

UHF can be customized to create attractive and unique irregular shapes, such as circles, columns, waves and other interesting configurations. UHF can be naturally integrated with original shapes and designs of buildings.

With modern look, UHF increases the popularity of the location and advertisement efficiency.



155° Viewing Angle



155°

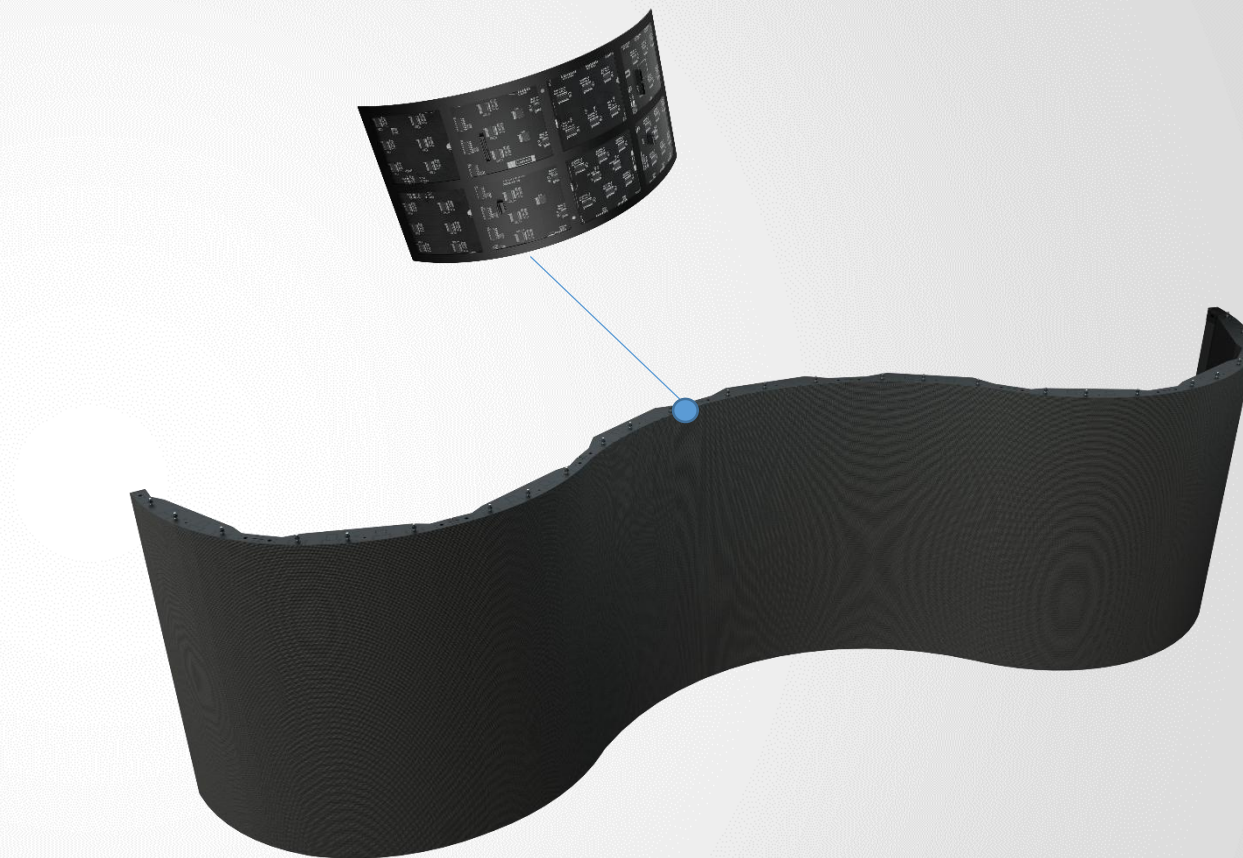
Horizontal and vertical 155° viewing angle.

Viewing screen content from a wider perspective and adapting to a variety of viewing environments, both front and side, will ensure a good viewing experience.

Ultra Flexible

UHF is able to create a circle with radius of 0.636m minimum. Owing exceptional flexibility and high density, UHF offers a wide range of design possibilities.

Flexible cabinet size, cabinet size can be customized according to project demands.



(Pixel pitch P1.5、 P1.8、 P2.5、 P3.2、 P3.9)

Sustainable Reliability

- Metal Bottom Case

Metal bottom case ensures the stress is evenly distributed to all parts of modules when curved, and plays critical role in high flatness of video wall;

Metal bottom case limits the internal and external curve range, protects the module from excessive bending;

Has better heat dissipation effect



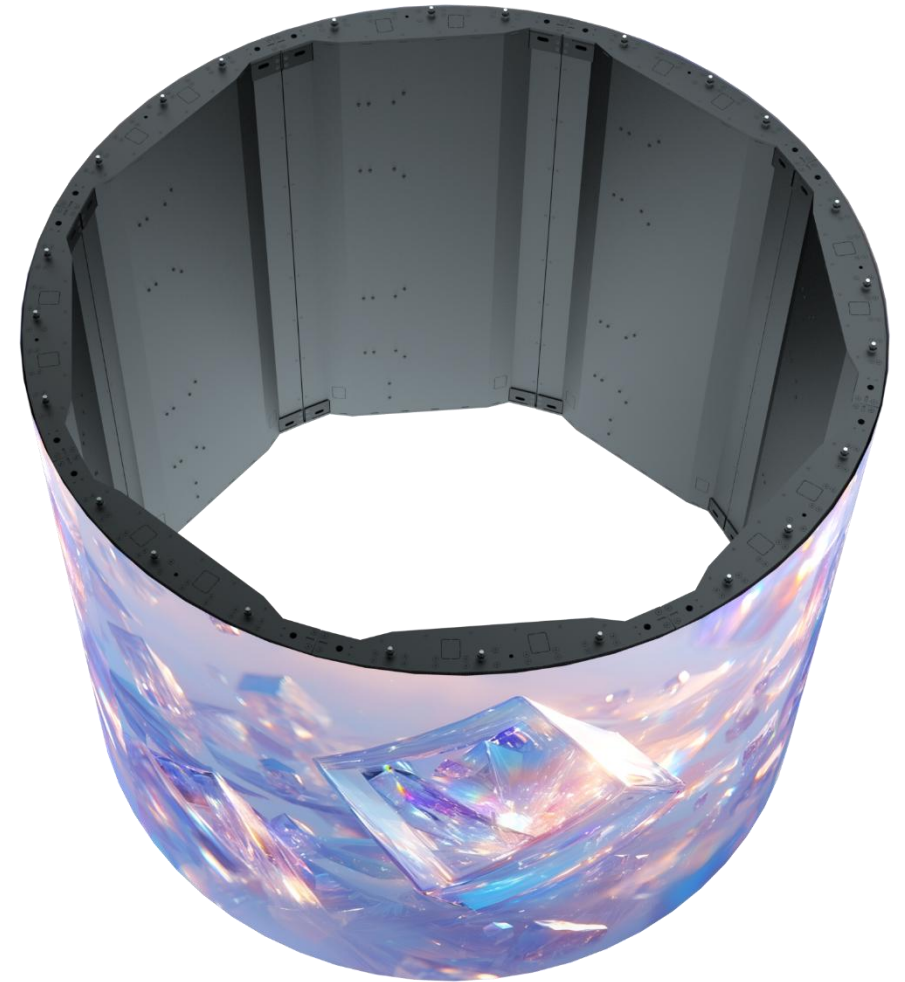
Sustainable Reliability

- PCB with FR-4 technology

UHF applied FR-4 technology on its PCB, which is trusted as highly reliable and secure technology in AV industry.

- Customized COS technology protection is available

Cos technology protects LEDs from collision, dust and water



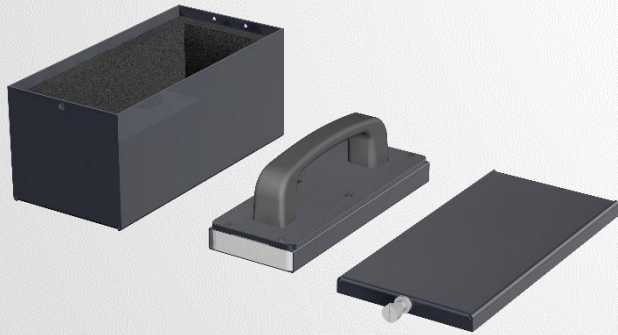
Streamline Operation Efficiency

- Arc module increases the speed of installation and curving precision.
- With each panel size 55" (customizable), it is natural to create native Full HD screens, at the same time ensures high screen flatness.



Streamline Operation Efficiency

Magnetic tool for front module maintenance



Case Study



Flexible LED 1.9mm, 155sqm, Spectrum of the Seas, 2019



TOGETHER, FOR A BRIGHTER FUTURE

Unilumin Group Co., Ltd.

Headquarters: 112 Yongfu Rd., Qiaotou Village, Fuyong Town, Baoan District, Shenzhen 518103 China.

Daya Bay Factory : Longsheng Fifth Road, western Daya Bay, Huiyang District, Huizhou, China.

Pingshan Factory : 6 Lanjing North Road, Pingshan District, Shenzhen 518118 China.

Tel: +86-755-29918999

Fax: +86-755-29912092

Sales E-mail: sales@unilumin.com

Official website: <http://www.unilumin.com>

