

The background is a deep blue gradient with several bright, diagonal streaks of light in shades of cyan and white, creating a sense of motion and depth. The text is centered in the middle of the frame.

UsurfaceIII Pro

Product Introduction

明星产品再升级：超节能，5年亮度保证*

Star Product Reloaded: Super Energy-Saving Innovation, 5years brightness warranty



UsurfaceIII Pro

- 6.67/8.33/10mm
- 800*900mm Profile Aluminum
- 400*300mm Module

Professional-Grade Visual Performance

- 10000nits, 7680hz, 14bit
- 160° viewing angle
- 16000:1 contrast ratio

Long-Term Reliability

- Premium LED chips
- ≤35% brightness degradation over 5 years
- Extended product lifecycle

Energy-Saving Engineering

- New Dual- voltage Output Power Supply
- Common Cathode Circuit design
- Reduces power consumption by 50%+*
- Certified low carbon footprint

Professional-Grade Protection

- Salt-spray corrosion resistant (coastal-ready)
- IP69K-rated weather resistance
- Dual-side Potted Module Design
- Operational range: -40°C to 60°C

Support creative design

- Supports 90° angled configurations
- Custom curved installations (min. diameter: 765mm)
- Support cabinet size customization

Fast Maintenance Features

- Easy module swap (8 knobs, <10 seconds)
- High-quality connectors enable quick plug/unplug
- 100% front & rear maintenance
- Module dual-potting waterproof design (no disassembly required)

*Specific configuration required

*Compare with 5V product

Star Product Reloaded: Super Energy-Saving Innovation



- 6.67/8.33/10
- 800*900*97mm profile aluminum
- 400*300*21mm module



Pro Vivid Display

10000nits / 5 years brightness warranty



Pro Energy-saving

10knits@650w/sqm Dual-voltage



Pro Protection

IP69K / double-side gluing



Pro Maintenance

Front&rear / Quick-Release Module



Pro vivid display : Sparkle every moment for clients

Unilumin

10,000nits

Outstanding visibility in the brightest outdoor environments

$\geq 14\text{bit}$ 、 $\geq 7680\text{Hz}$ 、16,000: 1 Contrast

More vivid and realistic, maximizing the inherent value of the advertising content

160 ultra-wide viewing angle

Carefully selected LED chips for longer service life while maintaining high quality display performance



*optional

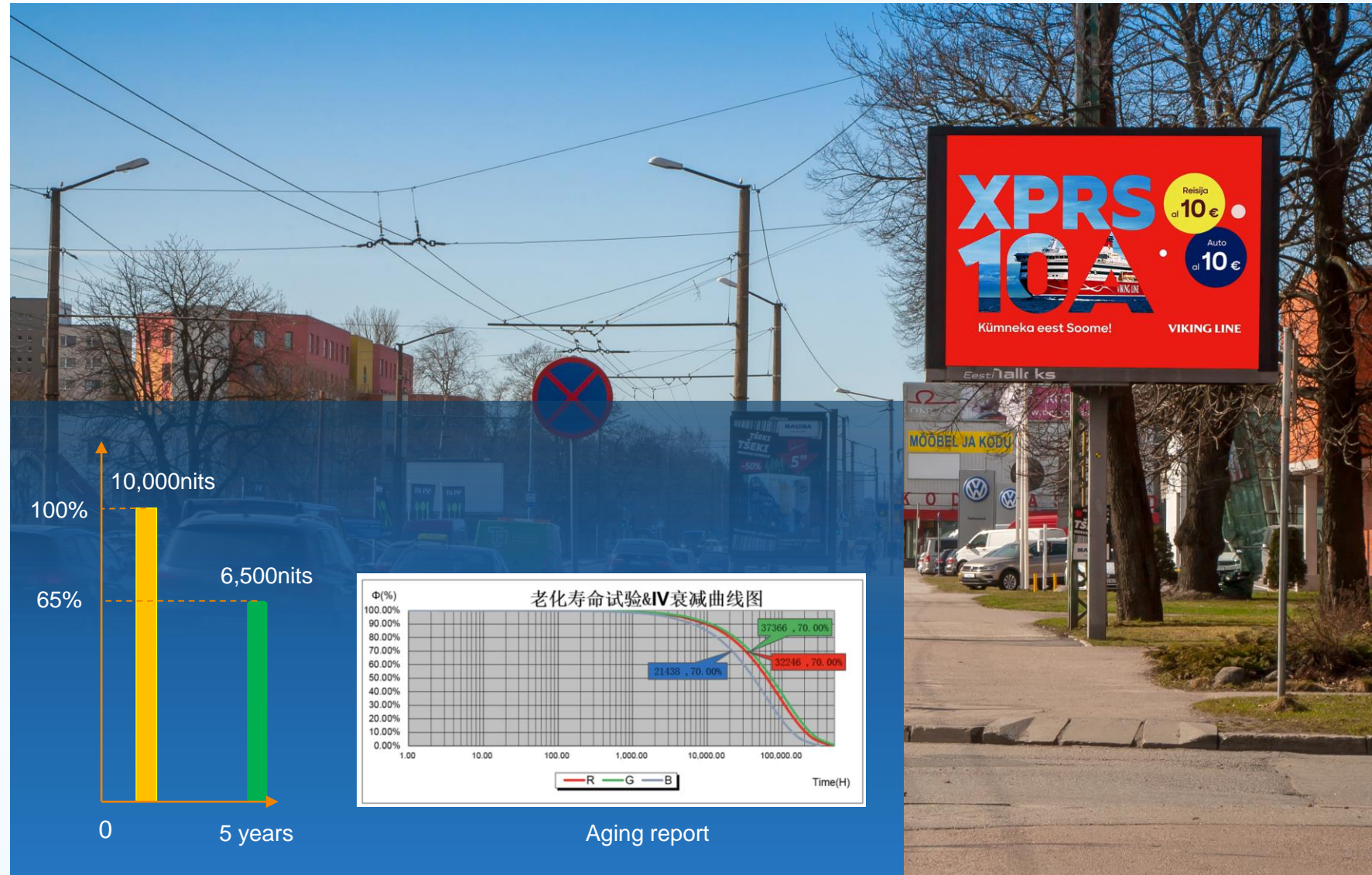


Pro vivid display : After five years, the screen can still maintain 6500 nits

Unilumin

5-Year Brightness Warranty

- ✓ High-quality LED Chips
- ✓ 5-Year Brightness Warranty
- ✓ Maintain 6500nits **after 5 years**

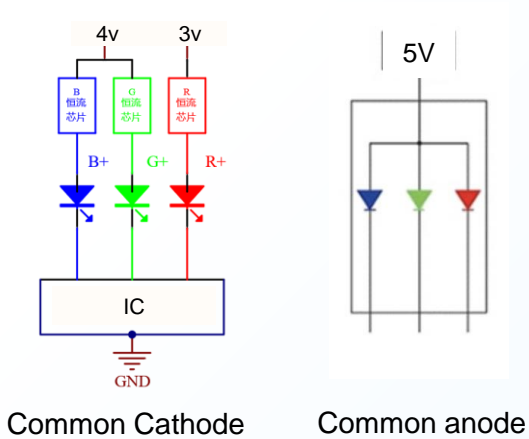




Pro Energy-saving : Reduces energy consumption by over 50%+

DVPS circuit design, with low supply voltage, saves 50%+* more compared to conventional displays.

- ✓ Dual-voltage (4v/3v)
- ✓ Common Cathode Energy-Saving



| LED | Brightness | Power consumption |
|-------------|------------|----------------------|
| S-level LED | 7500nits | 450 w/m ² |
| | 10000nits | 650 w/m ² |



* At the same brightness, it reduces energy consumption by over 50+% compared to traditional displays, resulting in lower electricity costs (for a 50m² area, saving 21,000 kWh over 3 years). This contributes to green energy efficiency.

Pro Energy-saving : "Green" Design & "Low-Carbon Product"

Unilumin

The UsurfaceIII Pro features a low-carbon, eco-friendly design, with the entire chassis constructed from **recyclable aluminum** alloy and a low-power consumption display panel. As a result, the product meets **the TÜV Carbon Footprint Certification, WEEE Compliance, and RoHS 2.0 Environmental Certification**, making a significant contribution to protecting the Earth's environment.



2022/10

China's Ministry of Industry and Information Technology officially authorized Unilumin as a **"Carbon neutral commitment Demonstration Unit."**



2023/1

Unilumin was awarded the titles of **"Carbon Neutral Commitment Demonstration Unit"** and **"Industrial Product Green Design Demonstration Enterprise"** by the Ministry of Industry and Information Technology of China.



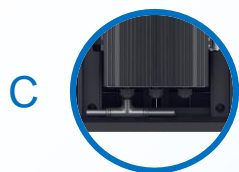
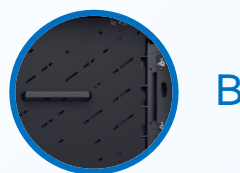
2023/4

TÜV SÜD issued a **carbon footprint verification** statement for Unilumin, and Unilumin became the first company in the industry to obtain a carbon label for TUV SUD LED displays.

Pro Protection : Ultra-Strong Adaptability, Outdoor Reliability

Unilumin

- A. Large-Area Heat Dissipation Design for Operation in **-40°C to 60°C**
- B. Module with Standard Sunshade to **Minimize Solar Radiation** in Billboard Scenarios
- C. Aviation-Grade Connectors , Resisting Hurricanes & Heavy Rain in **90% Humidity**
- D. **IP69K** Enclosure Design with Full-Stainless Components for Stable Operation in **Salt Spray Environments**



-40 C



60 C



Storm



Seaside

IP69K Test*



Water temperature: **80°C±5°C**



Water pressure: **80~100 bar**



Water flow rate: **14~16L/min**



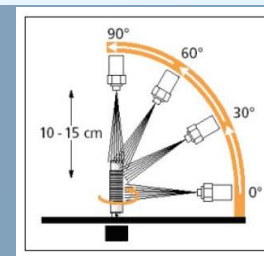
Water spray distance: **10~15cm**



Water spraying angle: **0°, 30°, 60°, 90°**



Water spraying time: **30 seconds per angle**









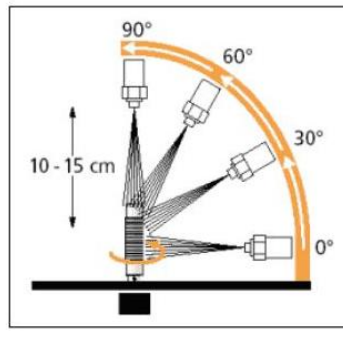
Pro Protection : Ultra-Strong Adaptability, Outdoor Reliability

Unilumin

- ✓ **IP69K** is a vehicle grade test standard , which is more stringent than the regular IP rating test: **higher temperature, higher pressure and multi-angle (0°, 30°, 60°, 90°)** .
- ✓ Compared with IP65, IP69K is a higher dimension protection test, which is closer to the real application of outdoor display screens, so customers don't need to worry about UsurfaceIII Pro 's operation status even in the salt spray or high temperature environment.

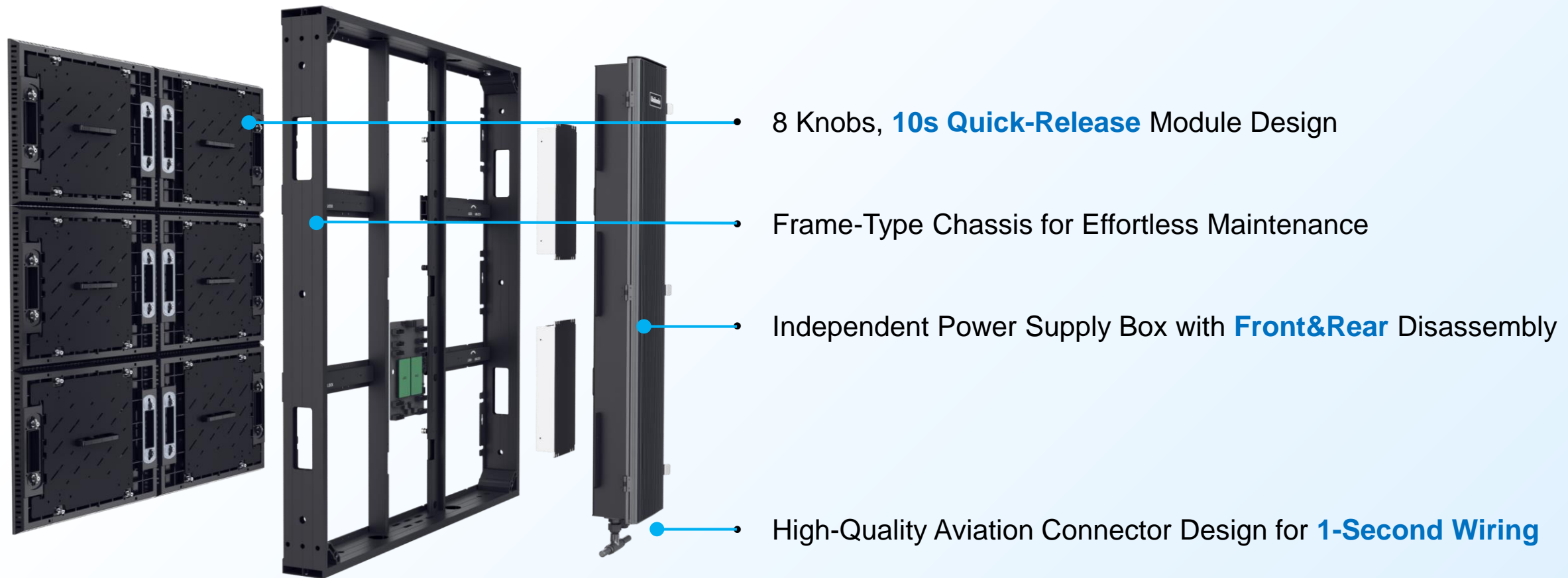
IP69K Test*

-  Water temperature: **80°C±5°C**
-  Water pressure: **80~100 bar**
-  Water flow rate: **14~16L/min**
-  Water spray distance: **10~15cm**
-  Water spraying angle: **0°, 30°, 60°, 90°**
-  Water spraying time: **30 seconds per angle**



Pro Maintenance : Full-Screen Maintenance in < 5 Minutes

Unilumin

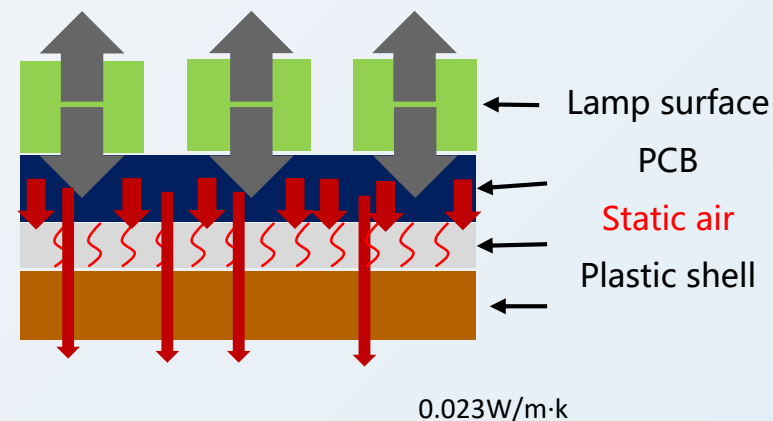
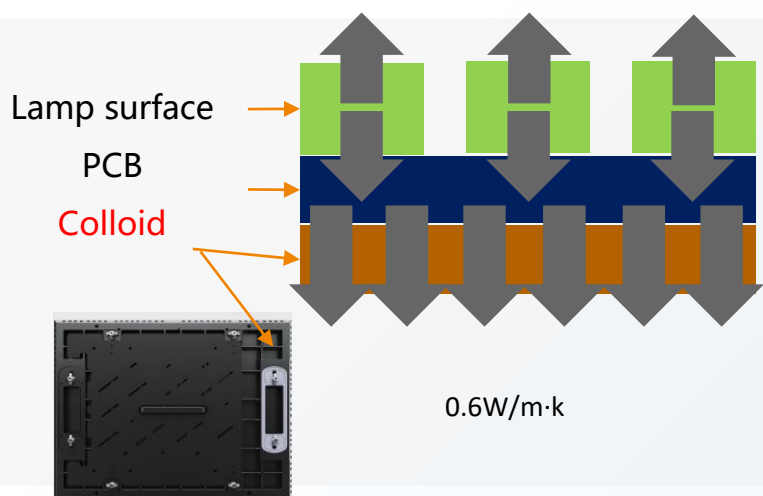


Pro Maintenance : Dual-side Potted Module Design

Unilumin

- ✓ The **Dual-side Potted Module** Improves thermal conductivity by **26x** and ensures **uniform heat distribution** compared to traditional PC shells.

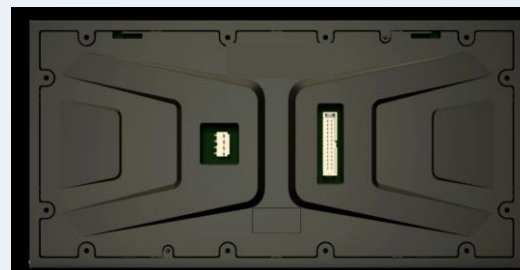
Under enclosed conditions, the thermal conductivity of air is $0.023\text{W/m}\cdot\text{k}$, while the thermal conductivity of electronic encapsulation glue is greater than $0.6\text{W/m}\cdot\text{k}$. The thermal conductivity of encapsulation glue is more than 26 times higher than that of static air.



- ✓ IC maintenance requires no shell disassembly, enabling **Quick Service**.



1. Excavate the potting compound
2. Replace the IC
3. reapply potting compound.



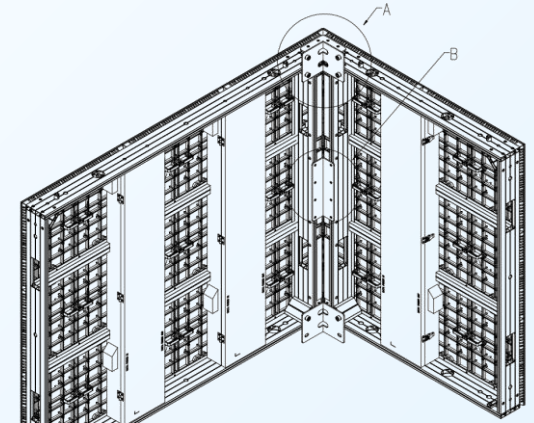
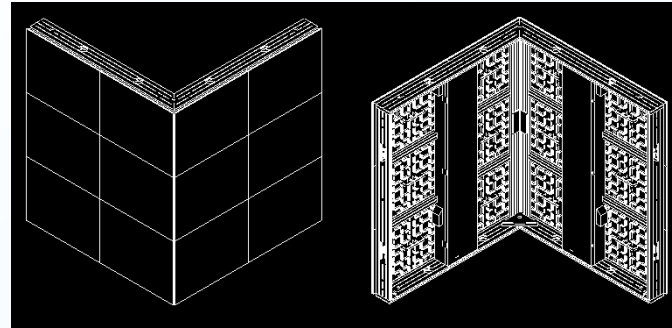
1. Remove the entire bottom shell.
2. Replace the IC
3. reinstall the bottom shell.

Creative Styling with Butter-Smooth Transitions

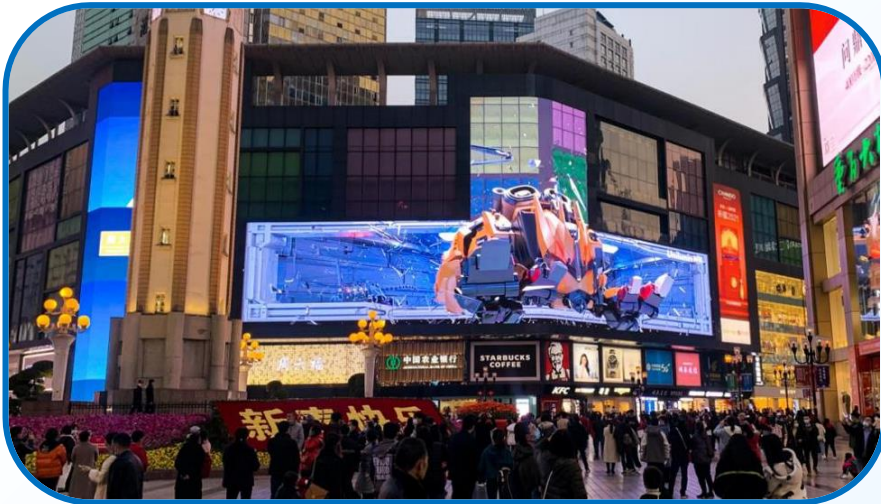
Unilumin



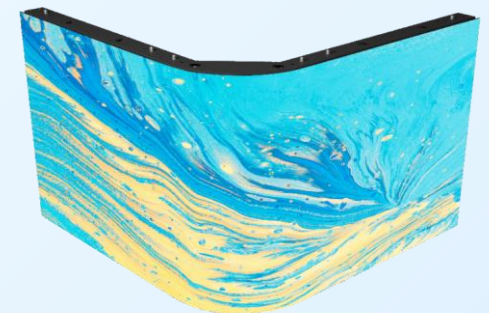
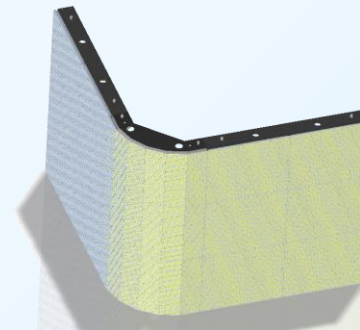
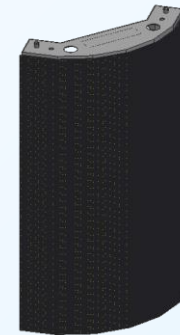
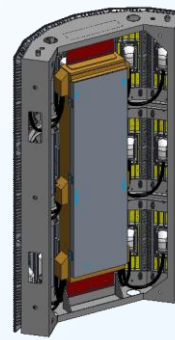
90-Degree Angle



45-Degree Module + 90-Degree cabinet



Arc Solution



- **100×300mm** Module + Customized Sheet Metal cabinet
- Solution Supports **ALL Pitch** Compatibility

Flexible design, adapting to multi-scenario needs

Unilumin

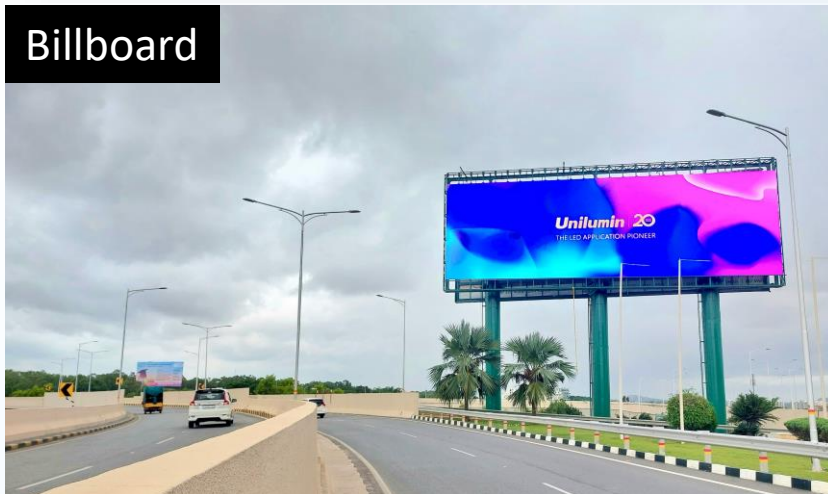
Building facades



Gas station



Billboard



Sports



| Product | UsurfaceIII6 Pro | UsurfaceIII8 Pro | UsurfaceIII10 Pro |
|-------------------------|-------------------------|------------------|-------------------|
| Pixel Pitch | 6.67mm | 8.33mm | 10mm |
| LED Type | SMD2727 | | |
| Brightness | 10,000cd/m ² | | |
| Cabinet Weight | 29 kg/m ² | | |
| Module Size | 400*300*21mm | | |
| Cabinet Size(W x H x D) | 800*900*97mm | | |
| Cabinet Material | Profile Aluminum | | |
| IP Rating | IP69K | | |
| Maintenance Method | Front & Rear | | |
| Power (Max) | 650W/m ² | | |
| Power (Avg) | 217W/m ² | | |
| Certification | CCC / CQC / CE / CB | | |

Unilumin

TOGETHER, FOR A BRIGHTER FUTURE

Unilumin Group Co., Ltd.

Headquarters: 112 Yongfu Rd., Qiaotou Village, Fuyong Town, Baoan District, Shenzhen 518103 China.

Daya Bay Factory : Longsheng Fifth Road, western Daya Bay, Huiyang District, Huizhou, China.

Pingshan Factory : 6 Lanjing North Road, Pingshan District, Shenzhen 518118 China.

Tel: +86-755-29918999 Fax: +86-755-29912092

Sales E-mail: sales@unilumin.com Official website: <http://www.unilumin.com>

